

ASSEMBLY INSTRUCTIONS

HYDRAULIC-KIT

for hydraulic Quick Coupler
with double-acting cylinder





IMPRINT

HENLE Baumaschinentechnik GmbH

Ringstrasse 9
89192 Rammingen - Germany

Telefon: +49 (0) 73 45 - 96 77 0

Fax: +49 (0) 73 45 - 96 77 17

info@henle-baumaschinentechnik.de

www.henle-baumaschinentechnik.de

Status: 07/2021



TABLE OF CONTENTS

NOTE(S)	4
INSTALLATION KIT	5
PROCEDURE	7
HYDRAULIC CIRCUIT DIAGRAM	8
UNLOCKING AND LOCKING	9
ELECTRICAL WIRING DIAGRAM	10
CUTOUT FOR SWITCH	11

NOTE(S)

In the latest standard for earth-moving machines, the legislator prescribes that hydraulic Quick Couplers with a wedge-shaped locking system must be permanently subjected to pressure (please see DIN EN 471-1).

This means that a separate hydraulic circuit must be used for the function 'Close/Open Quick Coupler'. This must be retrofitted to the excavator if necessary - and if not already present.

The installation kit offered by HENLE Baumaschinentechnik GmbH offers the customer a Basic Kit consisting of parts that must be used: 4/2 way solenoid valve, manifold block, and a electrical switch with buzzer.

However, it is not possible for us to offer a complete kit that is especially 'tailor-made' for your excavator due to the large number of excavator types and the constantly changing equipment.

Since extensive technical interventions may have to be carried out and to ensure your safety, we recommend that we do the installation for you in a specialized workshop.

INSTALLATION KIT

INSTALLATION KIT HYDRAULIC QUICK COUPLER

Position	Name	Quantity
1	Kit control block 12V/24V	1
2	Kit distribution block	1
3	Rocker switch complete	1
4	Signal transmitter 12V/24V	1

INSTALLATION KIT

Position 1



Position 2



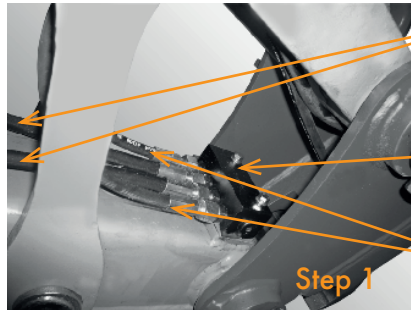
Position 3



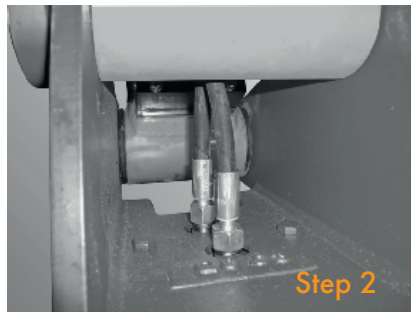
Position 4



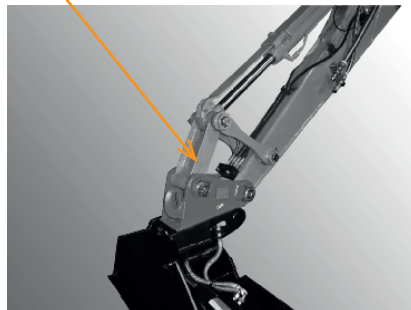
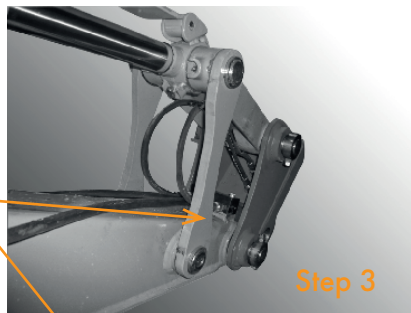
1. Install distribution block in the front of the excavator arm.



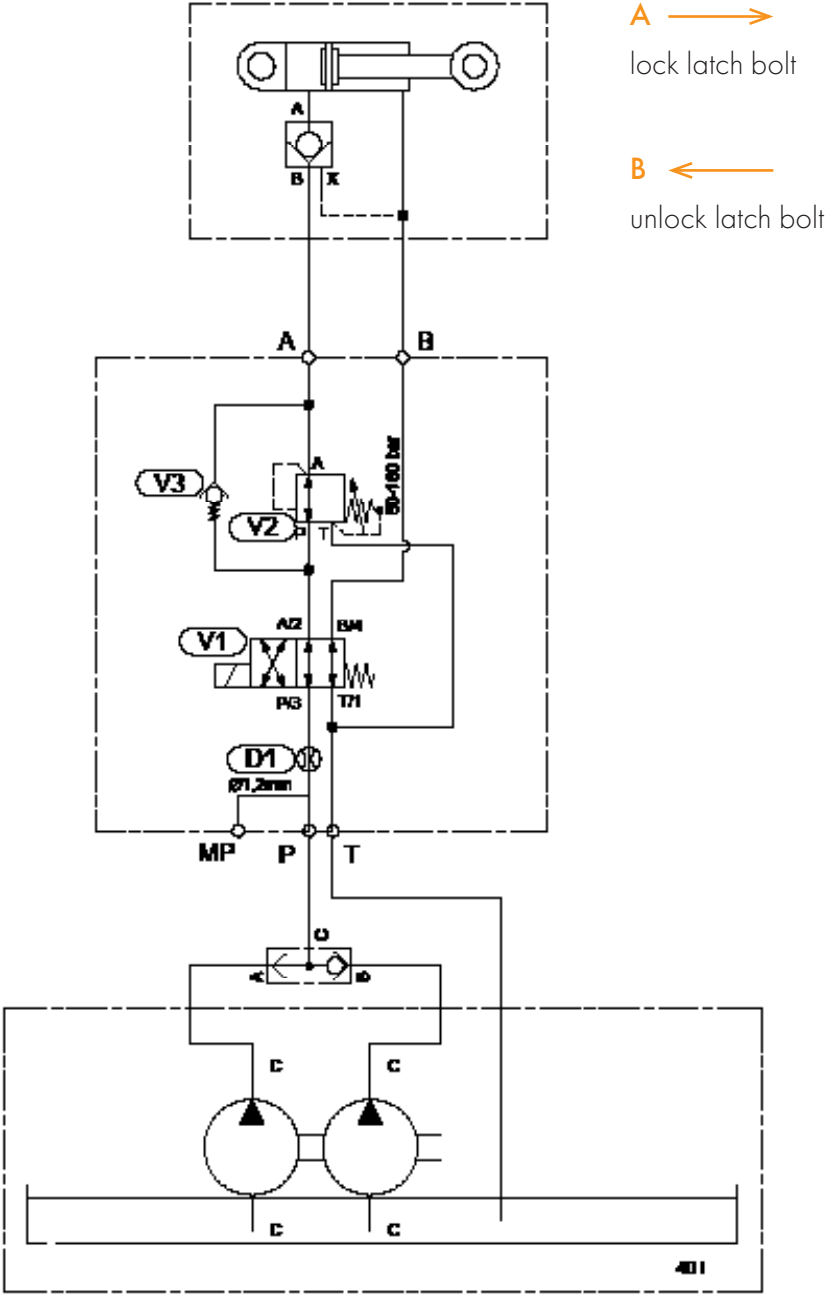
2. Connect the quick coupler: either use a straight or 90° screw connection



3. Length of hose: adjust arch according to kinematics

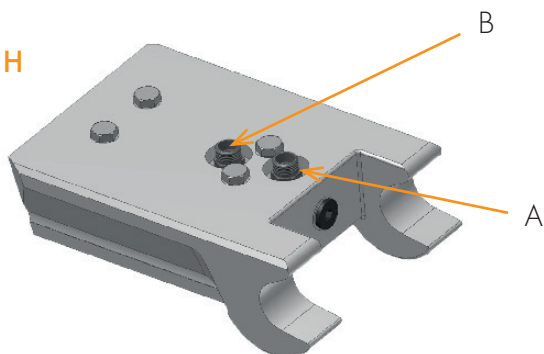


HYDRAULIC CIRCUIT DIAGRAM

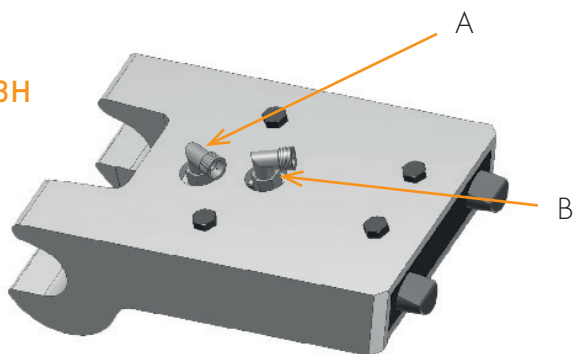


HYDRAULIC CIRCUIT DIAGRAM

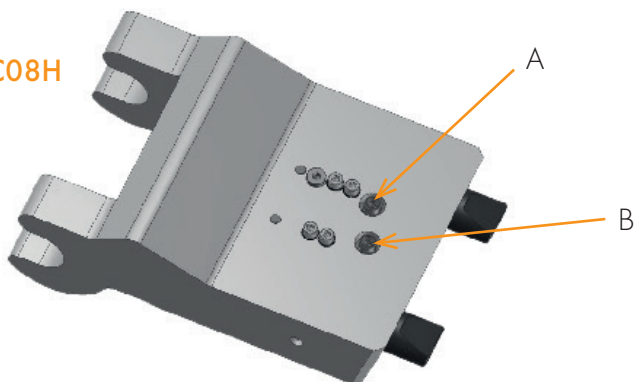
QC01H



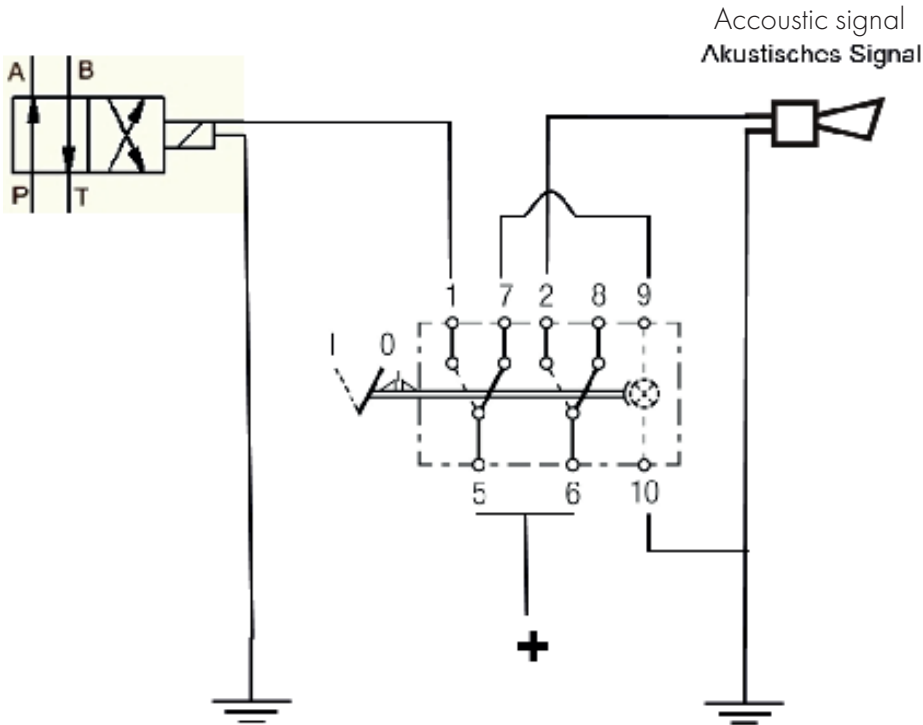
QC03H



QC08H



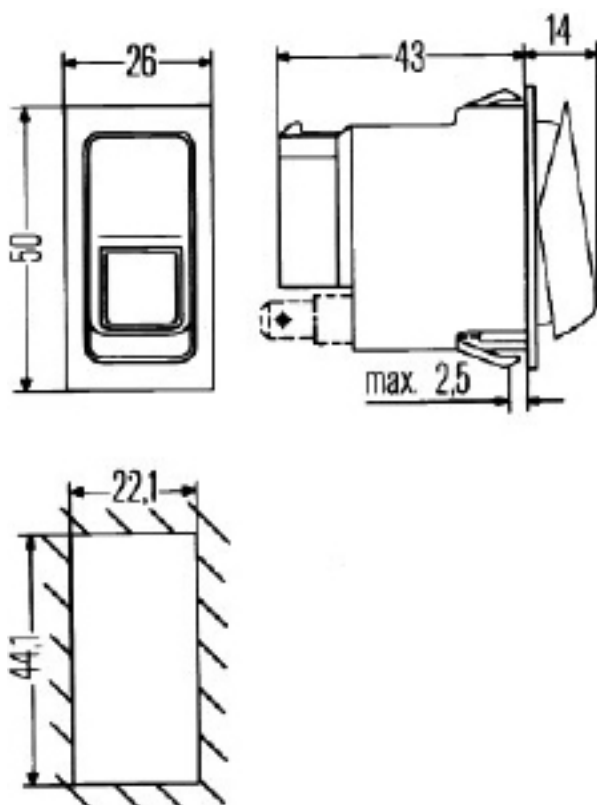
ELECTRICAL WIRING DIAGRAM



WARNING!

Pay attention to the LED, plus sign.

CUTOUT FOR SWITCH





HENLE Baumaschinentechnik GmbH

Ringstrasse 9 · 89192 Rammingen - Germany

TELEFON: +49 (0) 7345 - 96 77 0

TELEFAX: +49 (0) 7345 - 96 77 17

E-MAIL: info@henle-baumaschinentechnik.de

INTERNET: www.henle-baumaschinentechnik.de

CONVINCING QUALITY. TOP SERVICE.

